




# LADIVA BEAUTY COLLEGE

## *Fee structure & Programs*



**INTAKE  
ONGOING**

 **0701 733 332 / 0711 604 609**

 [Ladivabeautycollege.co.ke](http://Ladivabeautycollege.co.ke)

   **Ladiva Beauty College**

 [ladivabeautyschool@gmail.com](mailto:ladivabeautyschool@gmail.com)

## Diploma/ Certificate COSMETOLOGY - EXAM BODY (CDACC)

LEVEL	CORE UNITS	DURATION	MONTHLY FEES	TOTAL
<b>LEVEL 4 (ARTISAN) MODULE I</b>	<ul style="list-style-type: none"> <li>Plaiting &amp; Braiding</li> <li>Barbering</li> <li>Manicure &amp; Pedicure</li> </ul>	3 Months	6,000	36,000
	<b>MODULE II</b> <ul style="list-style-type: none"> <li>Make up</li> <li>Hair addition</li> <li>Hair styling</li> </ul>	3 Months		
<b>LEVEL 5 (CERTIFICATE)</b>	<ul style="list-style-type: none"> <li>Level 4</li> <li>Dread locking</li> <li>Nail care</li> <li>Hair removal</li> <li>Hair cutting</li> <li>Facial &amp; skin care</li> <li>Digital Literacy</li> </ul>	12 Months	6,000	72,000
<b>LEVEL 6 (DIPLOMA)</b>	<ul style="list-style-type: none"> <li>Level 5</li> <li>Chemical reformation</li> <li>Hair extension</li> <li>Salon management</li> <li>Hair coloring</li> <li>Body massage</li> <li>Cosmetology research</li> </ul>	18 Months	6,000	108,000



## Diploma/ Certificate

### BEAUTY THERAPY/HAIR DRESSING - EXAM BODY (NITA)

GRADE	BEAUTY THERAPY CORE UNITS	HAIR DRESSING CORE UNITS	DURATION	MONTHLY FEES	TOTAL
<b>ARTISAN</b> <b>(GRADE III)</b>	<ul style="list-style-type: none"> <li>• Nail care</li> <li>• Basic Massage</li> <li>• Basic Makeup</li> <li>• Basic Skincare</li> <li>• Henna treatment</li> <li>• Ear piercing</li> <li>• Brows &amp; Lash treatment</li> </ul>	<ul style="list-style-type: none"> <li>• Shampooing &amp; conditioning</li> <li>• Hair styling &amp; setting</li> <li>• Plaiting &amp; braiding</li> <li>• Barbering</li> <li>• Locking &amp; crocheting</li> </ul>	4 Months	6,000	24,000
<b>CERTIFICATE</b> <b>GRADE II</b> <b>(Pre-requisite</b> <b>GRADE III)</b>	<b>Grade III</b> <ul style="list-style-type: none"> <li>• Advanced nail care</li> <li>• Body treatments</li> <li>• Special occasion makeup</li> <li>• Advanced skincare</li> <li>• Temporary hair removal</li> </ul>	<b>Grade III</b> <ul style="list-style-type: none"> <li>• Hair weaving</li> <li>• Chemical reformation</li> <li>• Permanent waving</li> <li>• Thermal styling</li> <li>• Hair extension</li> <li>• Bridal hairstyling</li> </ul>	8 Months	6,000	48,000
<b>DIPLOMA</b> <b>GRADE I</b> <b>(Pre-requisite</b> <b>GRADE II)</b>	<b>Grade II</b> <ul style="list-style-type: none"> <li>• Nail technology</li> <li>• Advanced body treatments</li> <li>• Creative makeup</li> <li>• Skin care specialist</li> </ul>	<b>Grade II</b> <ul style="list-style-type: none"> <li>• Hair coloring &amp; bleaching</li> <li>• Hair cutting techniques</li> <li>• Advanced hair styling</li> <li>• Wig making and hair piece</li> <li>• Scalp treatment &amp; Hair care</li> <li>• Fashion &amp; creative hair styling</li> </ul>	12 Months	6,000	72,000
<b>NAIL TECHNOLOGY</b> <b>(CERTIFICATE)</b>	<ul style="list-style-type: none"> <li>• Manicure &amp; Pedicure</li> <li>• Enamel extension</li> <li>• Basic nail art (gel)</li> <li>• Nail Henna</li> </ul>		3 Months	8,000	24,000
<b>NAIL TECHNOLOGY</b> <b>(DIPLOMA)</b>	<ul style="list-style-type: none"> <li>• Manicure &amp; Pedicure</li> <li>• Enamel Extension</li> <li>• Gel Overlay &amp; Extension</li> <li>• Acrylics Overlay &amp; Extension</li> <li>• Nail Arts</li> </ul>		5,000	8,000	40,000

### ADMISSION REQUIRMENTS

ITEM	COST
Registration	1,000
Student ID card	500
Uniforms (3 t-shirts & apron)	3,500
Students practical work book	500

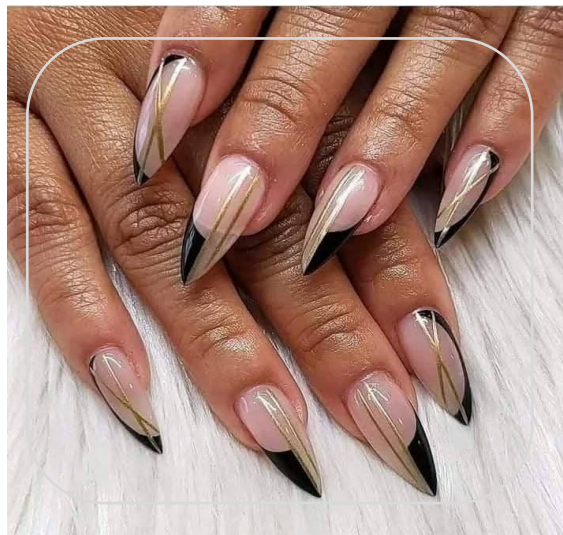
ITEM	COST
Caution	1,000
Equipment & Maintenance	2,000
Graduation	3,000
Internal examination	5,000
Training kit/month (optional)	3,500

#### Required documents (copy)

1. National ID/ birth certificate
2. KCSE/KCPE certificate/ results slip
3. Colored Passport photos 2pcs

# SHORT COURSES

<b>NAILS</b>	<b>MODULES</b>	<b>DURATION</b>	<b>COURSE FEES</b>
<b>MANICURE &amp; PEDICURE</b>	<ul style="list-style-type: none"> <li>• Anatomy</li> <li>• Nail disorders</li> <li>• Men's nail care</li> <li>• Foot massage</li> <li>• Soak off gel</li> </ul>	<b>3 weeks</b>	<b>15,000</b>
<b>ENAMEL NAIL TECHNOLOGY</b>  <b>Pre-requisite:</b> Manicure & pedicure	<ul style="list-style-type: none"> <li>• Stick-on nails</li> <li>• Nail tips</li> </ul>	<b>2 weeks</b>	<b>10,000</b>
<b>ADVANCED NAIL CARE</b>  <b>Pre-requisite:</b> Manicure & pedicure	<ul style="list-style-type: none"> <li>• Paraffin wax</li> <li>• Hot oil nail care</li> <li>• French nails</li> </ul>	<b>2 weeks</b>	<b>10,000</b>
<b>GEL NAIL TECHNOLOGY</b>  <b>Pre-requisite:</b> Manicure	<ul style="list-style-type: none"> <li>• Gel Overlays</li> <li>• Gel extension</li> </ul>	<b>2 weeks</b>	<b>10,000</b>
<b>ACRYLIC NAIL TECHNOLOGY</b>  <b>Pre-requisite:</b> Manicure	<ul style="list-style-type: none"> <li>• Acrylics overlays</li> <li>• Acrylics extension</li> <li>• Dip in system</li> </ul>	<b>3 weeks</b>	<b>15,000</b>
<b>GEL NAIL ART</b>  <b>Pre-requisite:</b> Manicure & soak off gel, Nail enamel /gel nail technology	<ul style="list-style-type: none"> <li>• Ombre</li> <li>• French</li> <li>• Marble</li> <li>• Geometric</li> <li>• stickers</li> </ul>	<b>2 weeks</b>	<b>10,000</b>
<b>ADVANCED NAIL ART</b>  <b>Pre-requisite:</b> Manicure, Acrylic nail technology, Gel nail technology	<ul style="list-style-type: none"> <li>• Encapsulation</li> <li>• Acrylics French</li> <li>• 3D Arts</li> <li>• Acrylics Ombre</li> </ul>	<b>3 weeks</b>	<b>15,000</b>



# SHORT COURSES

<b>BEAUTY</b>	<b>MODULES</b>	<b>DURATION</b>	<b>COURSE FEES</b>
<b>WAXING</b>	• Body Waxing	<b>1 month</b>	<b>20,000</b>
	• Facial Waxing	<b>2 Week</b>	<b>10,000</b>
	• Facial	<b>1 Week</b>	<b>10,000</b>
<b>BROWS &amp; LASHES</b>	• Lash Extension	<b>1 month</b>	<b>20,000</b>
	• Eye Brow Tinting	<b>2 weeks</b>	<b>10,000</b>
	• Brow Lamination & Lash Lifting	<b>1 month</b>	<b>10,000</b>
<b>PERMANENT MAKEUP</b>	• Microblading	<b>1 Month</b>	<b>30,000</b>
	• Micro Shading	<b>1 Month</b>	<b>30,000</b>
	• Microblading & Micro Shading	<b>1 Month</b>	<b>30,000</b>
	• Lip Pigmentation	<b>1 month</b>	<b>30,000</b>
<b>BODY MASSAGE</b>	• Classic (Swedish)	<b>1 month</b>	<b>10,000</b>
	• Deep Tissue	<b>1 month</b>	<b>10,000</b>
	• Stone Massage	<b>1 month</b>	<b>15,000</b>
	• Indian Head ( shampoo girls/ Babber)	<b>2 weeks</b>	<b>10,000</b>
	• Reflexology	<b>1 month</b>	<b>15,000</b>
	• General Massage Therapy	<b>2 months</b>	<b>30,000</b>
<b>SPA BODY TREATMENTS</b>	• Body Bath, Steams, Wraps & Scrubs	<b>2 months</b>	<b>30,000</b>
<b>MAKE-UP</b>	• Self-makeup	<b>2 weeks</b>	<b>10,000</b>
	• Professional Makeup	<b>1 Month</b>	<b>20,000</b>
	• Creative Makeup (Advance professional)	<b>2 Months</b>	<b>30,000</b>
	• Professional makeup ( Bridal)	<b>1 month</b>	<b>20,000</b>
	• Advanced Professional makeup	<b>2 months</b>	<b>30,000</b>
<b>FACIAL &amp; SKIN CARE</b>	• Classic Facial Therapy	<b>2 weeks</b>	<b>20,000</b>
	• Advanced facial treatments	<b>2 months</b>	<b>30,000</b>
	• Skin tag removal	<b>1 month</b>	<b>20,000</b>
<b>BODY ARTS</b>	• Body Hennah	<b>1 month</b>	<b>20,000</b>
	• Ear piercing	<b>1 month</b>	<b>20,000</b>



# SHORT COURSES

HAIR DRESSING	DURATION	COURSE FEES
Barbering	1 month	20,000
Dreadlocking	2 months	20,000
Sister locking	1 month	20,000
Wig Installation	1 month	20,000
Plaiting & Braiding	2 months	20,000
Weaving	2 months	20,000
Hair Styling	2 months	20,000
Chemical Reformation	2 months	20,000
Hair extension	1 month	20,000
Hair addition	1 month	20,000

EVENTS	DURATION	MONTHLY FEES	COURSE FEES
Events management	8 months	6,000	48,000
Events decor & flower arrangements	6 months	6,000	36,000
Advances Events decor (Pre-requisite — events decor)	4 months	6,000	40,000

## ADMISSION REQUIREMENTS

ITEM	COST
Registration	1,000
Students ID card	500
Uniforms (3 t-shirts & apron)	3,500
Students practical work book	500

ITEM	COST
Caution	1,000
Equipment & Maintenance	2,000
Training kits (permanent makeup 15,000)	5,000
Internal examination	3,000

### Required documents (copy)

1. National ID/ birth certificate
2. KCSE/KCPE certificate/ results slip
3. Colored Passport photos 2pcs

# PROGRAM SCHEDULE

<b>PROGRAM</b>	<b>DAY</b>	<b>TIME</b>
Regular Classes (Morning)	Monday - Friday	8AM - 1PM
Regular Classes (Afternoon)	Monday - Friday	1PM - 5PM
Evening Programs	Monday - Friday	5PM - 8PM
Weekend Programs	Saturday & Sunday	8AM - 4PM
Online Programs	Saturday & Sunday	6PM - 8PM





For More Information / Enquiries Contact us On

## LADIVA BEAUTY COLLEGE

 **0701 733 332 / 0711 604 609**

 Ladiva Beauty College   Ladiva Beauty College

P.O BOX 1555, 40100 - KISUMU

 [ladvibeautyschool@gmail.com](mailto:ladvibeautyschool@gmail.com)

**PAY WITH**







PAYBILL

**247247**



MOBILE APP  
DIAL \*247#



EQUITY TILL NO. / ACCOUNT NO.

5 1 0 3 3 2

ACCOUNT NAME

LADIVA BEAUTY COLLEGE